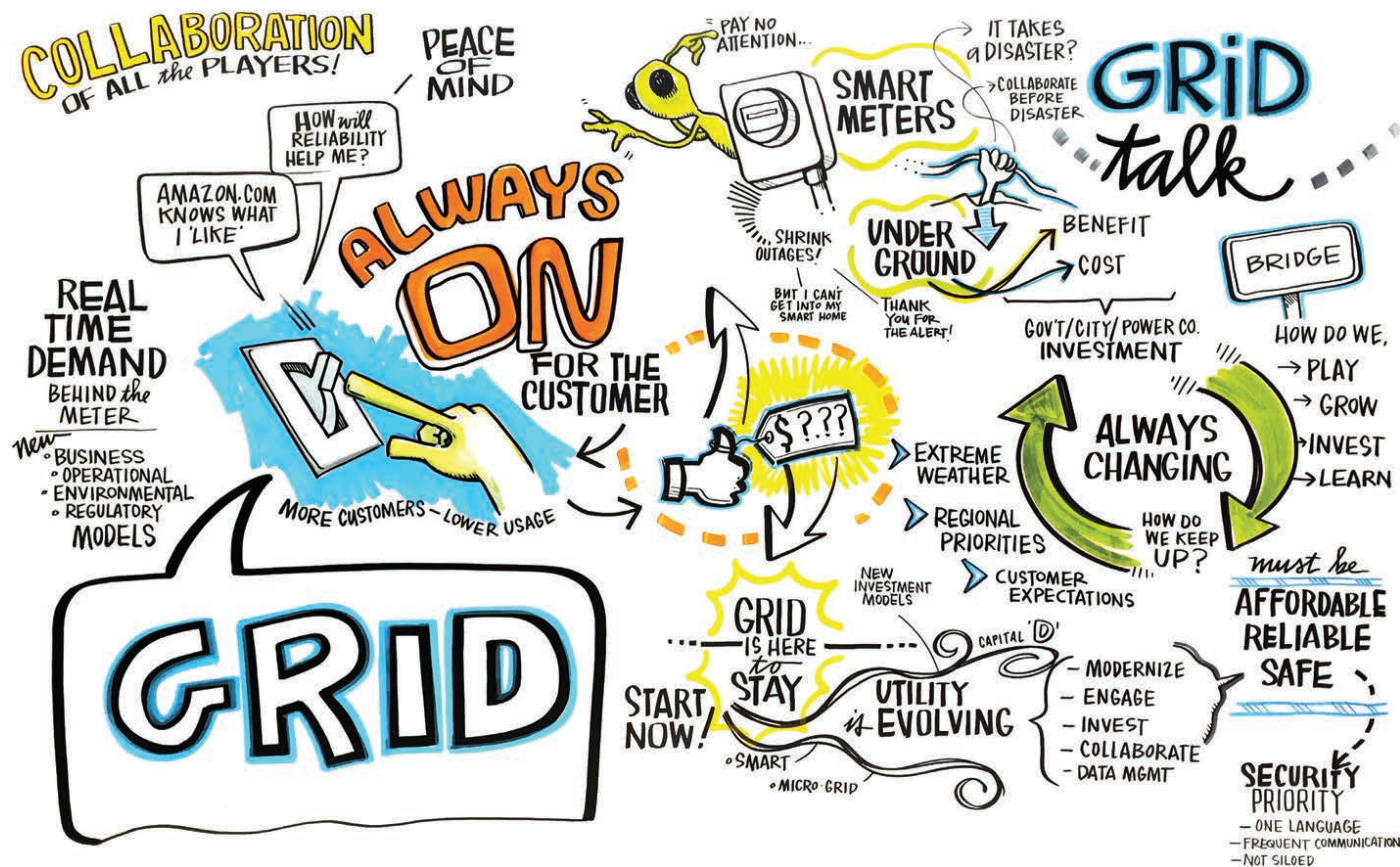


The Evolving Grid



“Like an organism, the grid evolves. Customers want it to be smarter, sturdier, and more flexible. Regulators want it to be self-healing and interactive—not only with steel in the ground, but also the intelligence and resilience to adapt to changing conditions.”

These images and text:

© 2015 by the Institute for Electric Innovation All rights reserved. www.edisonfoundation.net